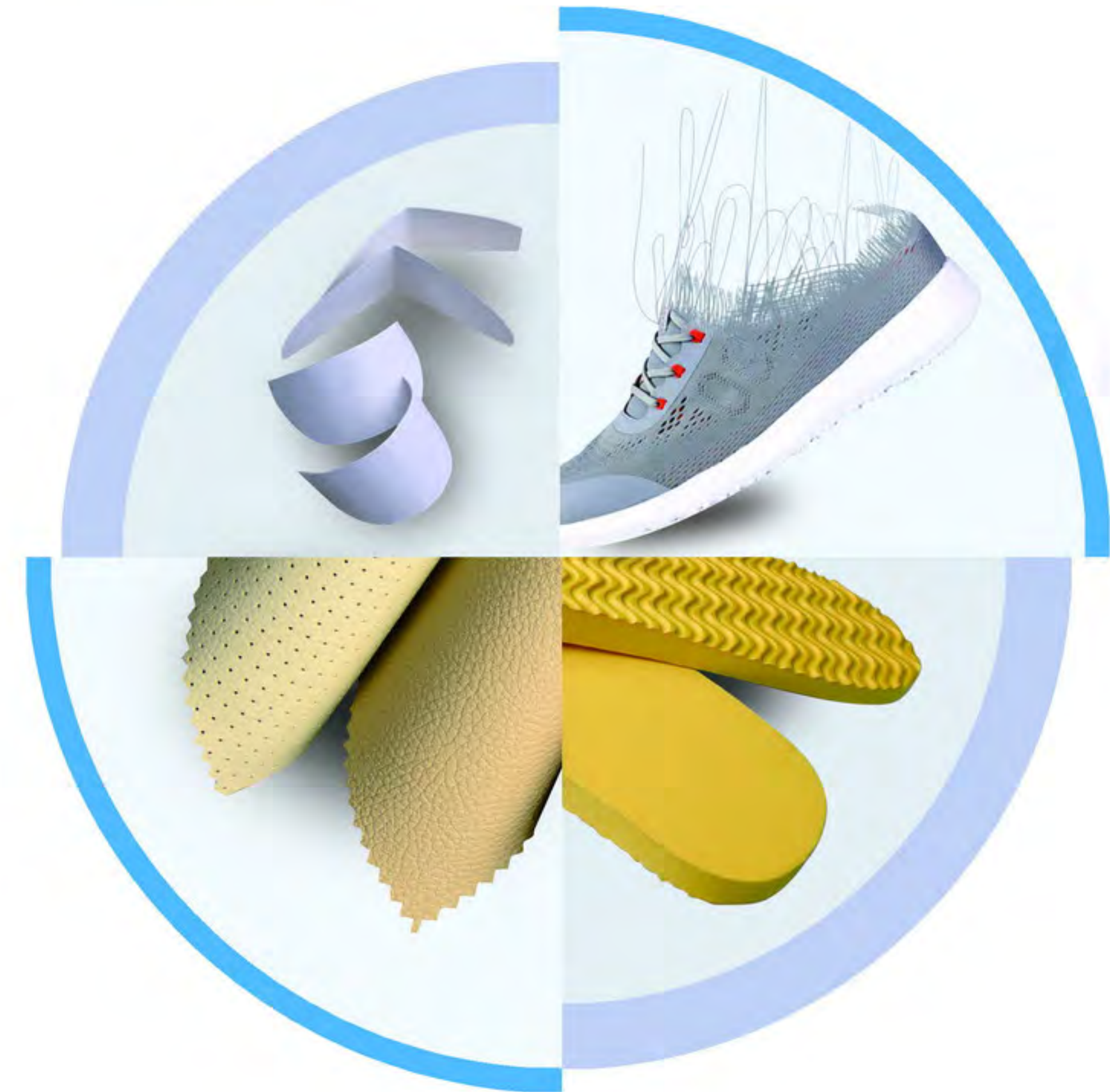




www.mh-chine.com



NINGBO MH INDUSTRY CO., LTD.

Add: #18 Ningnan North Road, Ningbo, China

Tel: 0086-574-27766888, 27766999

Fax: 0086-574-27766000, 27766111

E-mail: mh@mh-chine.com

Http://www.mh-chine.com

Http://www.mh-mh-chine.com



Scan to Dowload

ARTIFICIAL LEATHER FABRICS & SHOE ACCESSORIES

www.mh-chine.com



MH building, business center for about 500 sales staff.

Ningbo MH Industry was established in 1999, specialized in garment accessories and tailoring materials. After years of development, MH has set up business relationship with more than 150 countries, MH company was regarded as "Top 500 China Service Industry" and "AAA Trustworthy Company", and "MH" trademark get great reputation both in domestic and oversea market.

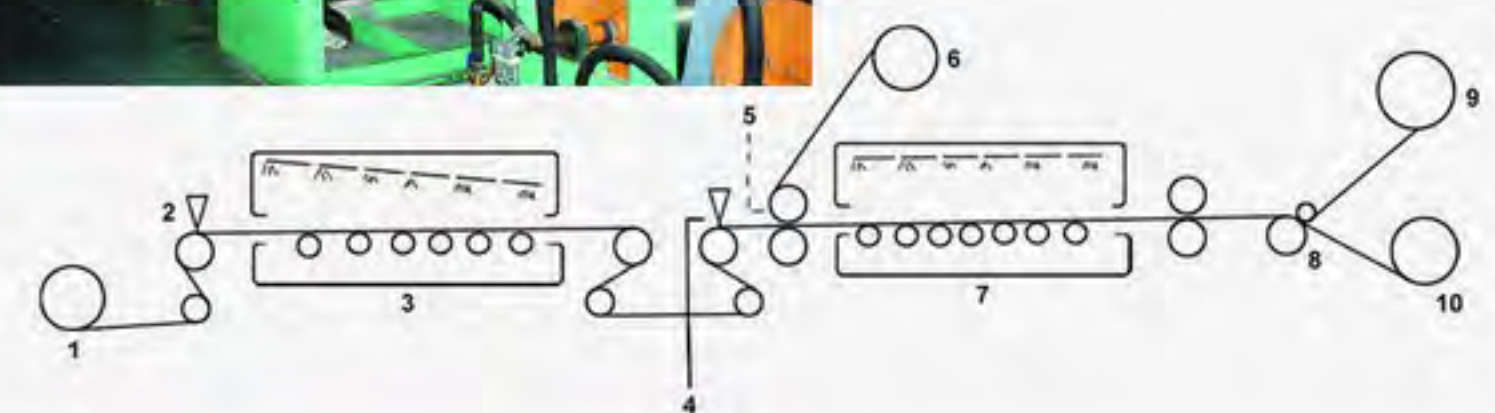
With 17 years' development, now MH has over 3,500 staffs, 5 large production bases(total 382000m²), with producing capacity up to 1500tons/month for sewing thread, 200tons/month for embroidery thread, and 700,000y/month for lace fabric. MH also set up long-term cooperation with more than 1500 manufacturers for over 1000 different kind of tailor's material products.

Now MH has 40 oversea customer service stations in different country, to give customers quick response local service, together with our ERP, MH APP and other IT system, MH could give customer personalized service everywhere. No matter how customer contact with MH, by E-mail, fax, telephone, APP IM or face to face, customer could always get efficient, prompt and professional service.

MH will make continuous efforts to create a kingdom of tailor's material, to supply customers with full-category, reasonable price, on-time delivery, suitable-quality tailor's material products.

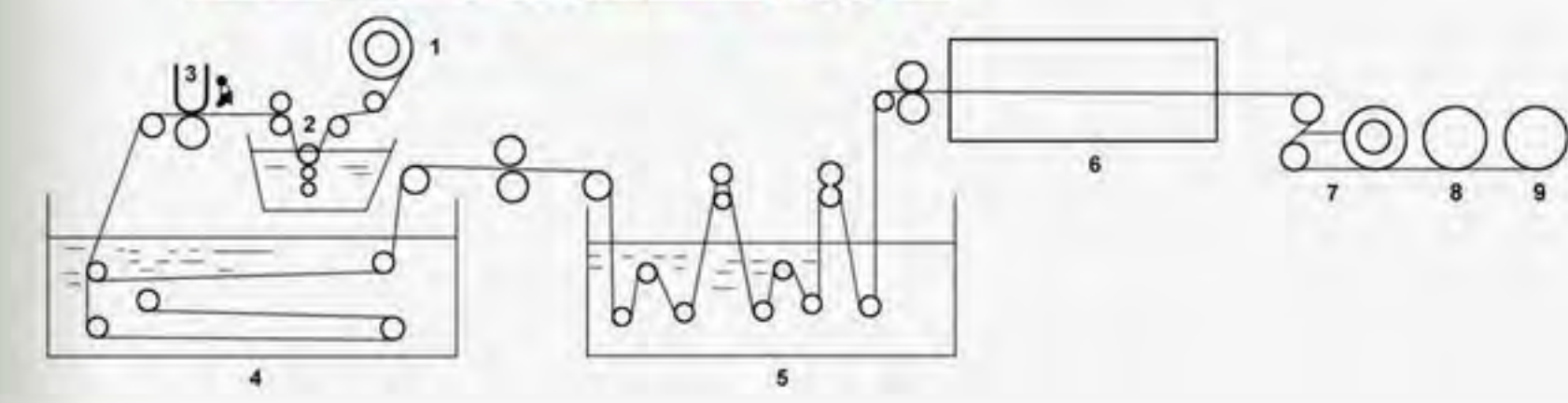


The coating resins for artificial leather and synthetic leather are mainly polyvinyl chloride (PVC) and polyurethane (PU). Artificial leather made of PVC resin is often called as PVC artificial leather (abbreviated as artificial leather); artificial leather using PVC artificial leather as coating and interlaced textile as the base is called PU artificial leather (referred to as PU leather); artificial leather produced with PU resin and non-woven fabrics is called PU synthetic leather (referred to as synthetic leather). Artificial leather and synthetic leather can be divided into two categories by their usage: civil and industrial. The leather for civilian use includes shoe leather, garment leather, luggage leather, and furniture leather. The industrial leather includes vehicle leather and floor leather. These kinds of leather may replace genuine leather in almost all occasions of leather usage for the production of daily necessities and industrial products.



Program of dry process production

- (1) release of paper
- (2) solution coating
- (3) dryer
- (4) glue
- (5) laminate in cold
- (6) Cloth
- (7) Dryer
- (8) Separation
- (9) Synthetic leather rewind
- (10) Paper rewind

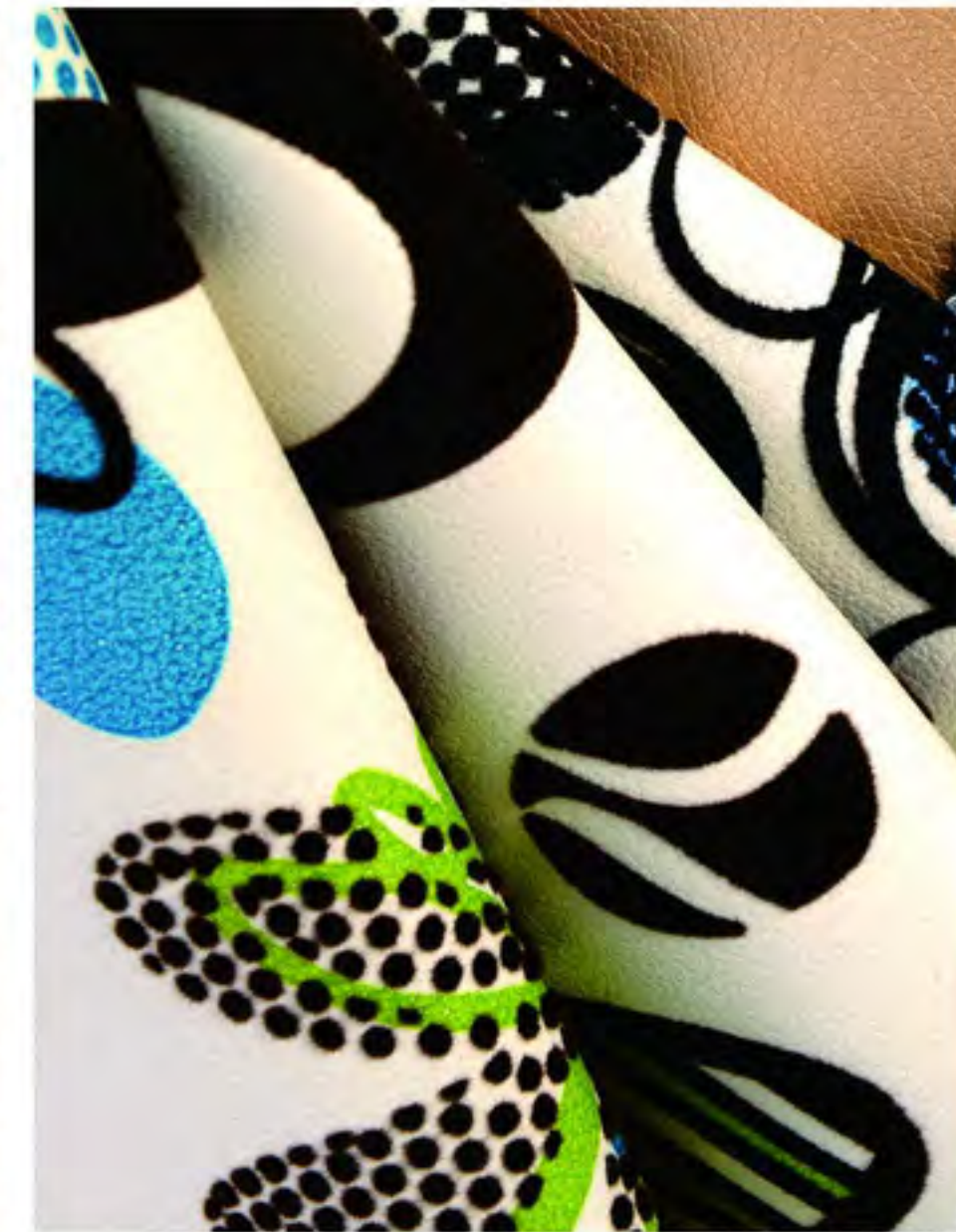
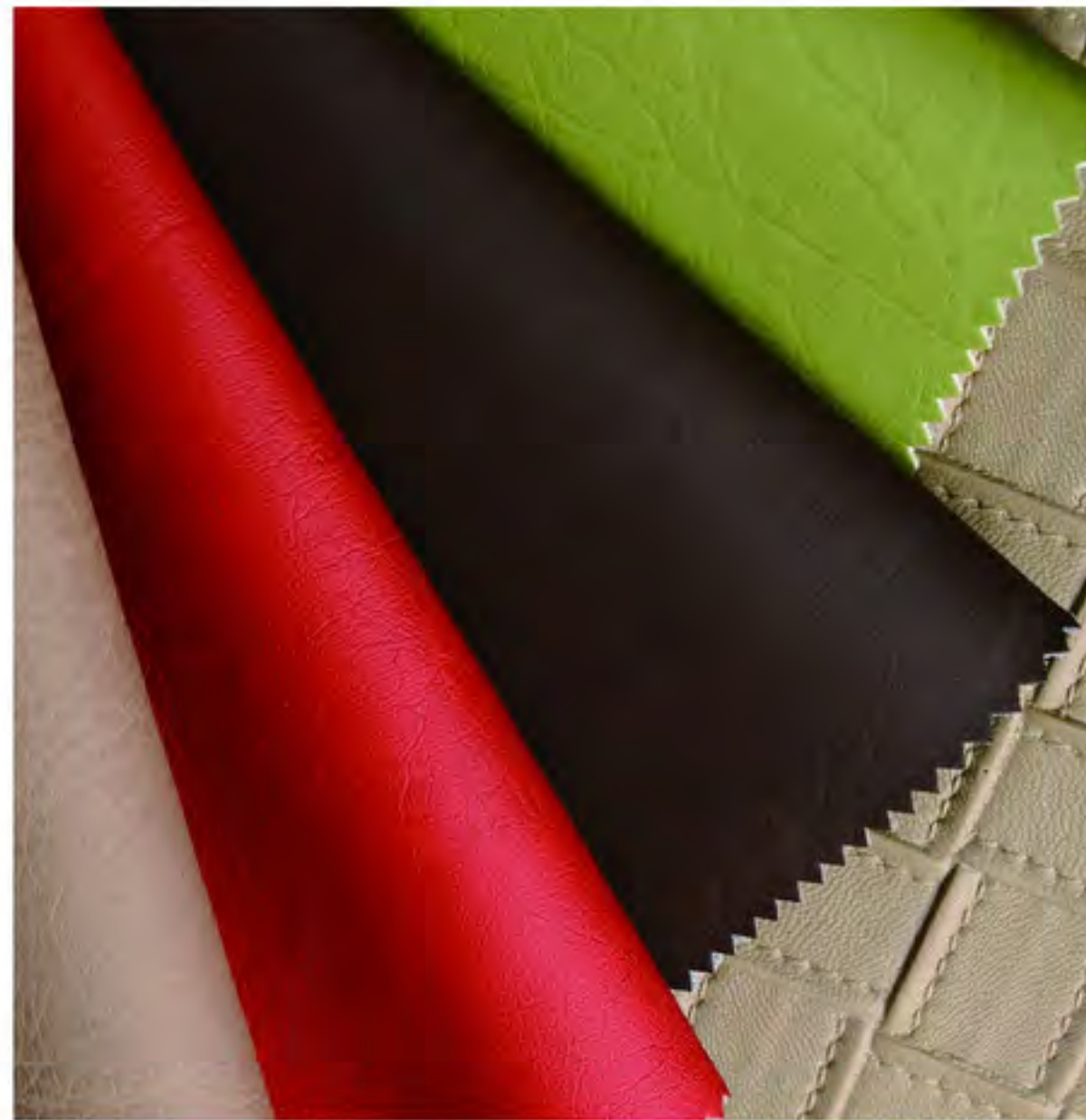


Program of humid process production

- (1) Cloth
- (2) pre-coagulation in the bathroom
- (3) solution coating
- (4) coagulation in the bathroom
- (5) washing in the bathroom
- (6) dryer
- (7) semi-finished product
- (8) surface treatment
- (9) winding

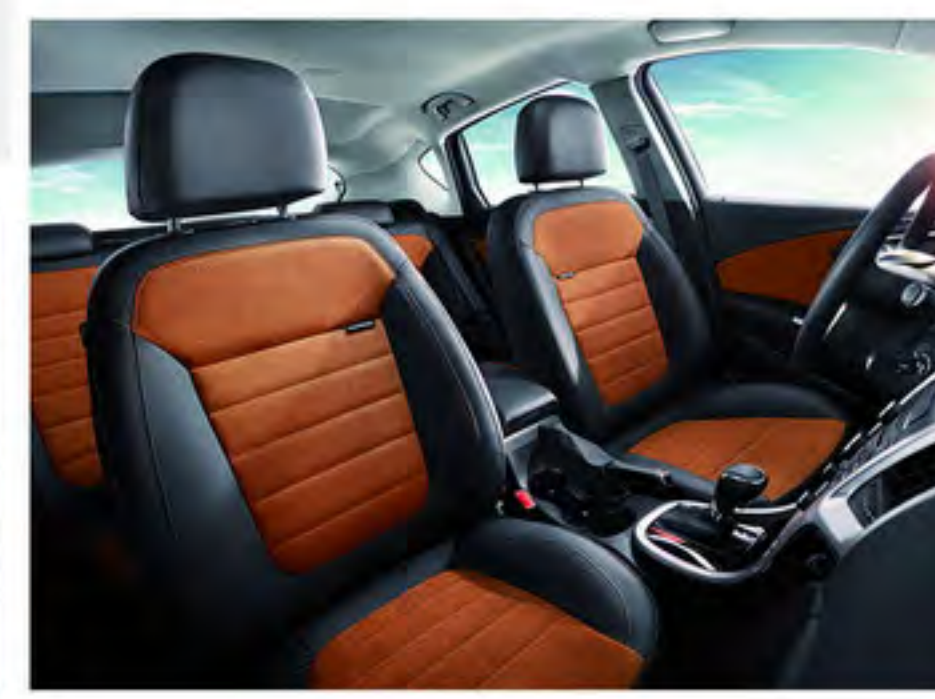


SOFA LEATHER



SOFA LEATHER, SEAT LEATHER, AND VEHICLE-PURPOSE LEATHER

Thickness: 0.6-2.0mm
Fabric width: 54" (Effective fabric width 137cm)
Base cloth: knitted fabric, elastic fleecy fabric, interwoven fabric, non-woven fabric
Color: can be produced according to the requirements of the clients or the color samples provided by our company, template calibration fitted with real leather
Surface processing: color alteration, paper line, embossing, spray, polychrome printing, luster adding, luster eliminating, polishing, buffing, grain kneading, punching and other techniques
Special requirements: environmental protection, wear resistance, scratch resistance, cold resistance, yellowing resistance, oil resistance, aging resistance, inflaming retarding(US inflaming retarding and British inflaming retarding)
Purposes: can be used in home sofa, student chair, dining table, meeting office chair, boss chair, massage chair, automobile seat, automobile upholstery, etc. automobile steering wheel, etc.



DECORATIVE LEATHER

Thickness: 0.7-1.2mm

Fabric width: 54" (Effective fabric width 137cm)

Base cloth: knitted fabric, fleecy fabric, eyelet fabric, non-woven fabric, etc.

Color: can be produced according to the requirements of the clients or the color samples provided by our company.

Surface processing: embossing, pearly luster, spring onion powder sprinkling, top coating, knife scraping, luster adding, luster eliminating and other techniques.

Special requirements: environmental protection and inflaming retarding, etc.

Purposes: used for soft roll fitment (wall space, background wall, sliding door, bedside backrest, European style sofa, etc.)

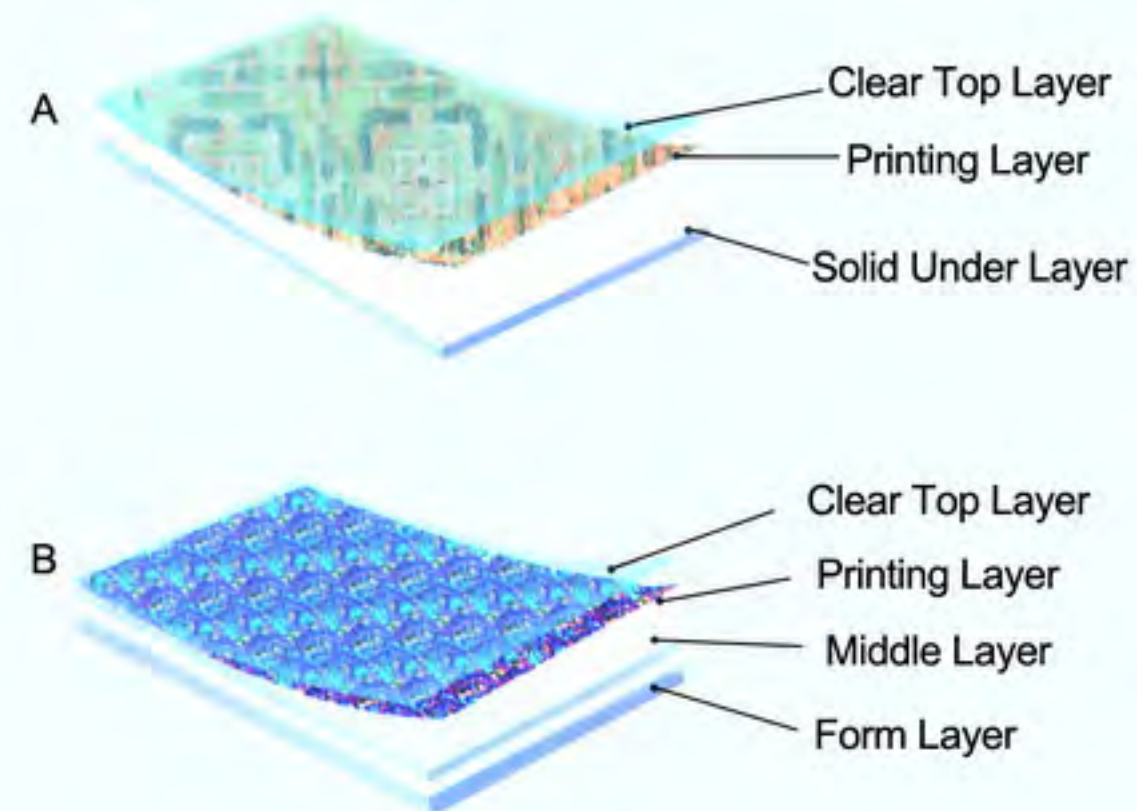




PVC SPONGE FLOORING

Thickness: 0.35mm.....1.0mm, 1.2mm, 30m/roll
 Width: 1.0m, 1.2m, 1.5m, 1.7m, 1.8m, 2.0m.
 Length: 183cm, 200cm

PVC FLOORING STRUCTURE



FLOOR LEATHER

Thickness: 1.5mm-2.0mm.

Regular civil-use floor leather: 0.35mm,0.4mm,1.0mm; frothing: 1.2mm.

Fabric width: 1.83m, 2.0m

Base cloth: with base cloth, without base cloth (needle punching nonwoven cloth, spunlace nonwoven cloth)

Color: selected according to the current color & design of each supplier, or new design rod is created.

Special requirements: embossing, luster adding, luster eliminating, and other techniques.

Purposes: commercial use (hospital, school, hotel, bus) and civil use.





NEEDLING FLEECY NON-WOVEN FABRIC CARPET

Fabric width: 1.0-4.0 meters

Grammage: 350-600gsm

Techniques: shape the fabric by needling or other techniques, brushing, back gluing, drying set...

Main purposes: interior decoration of vehicles, exhibition halls, exhibition pavilions, celebration ceremonies, corridors and lobbies of hotels and household carpet fabric...

PVC SPINNING CARPET/FOOTPAD

Material: PVC plastics

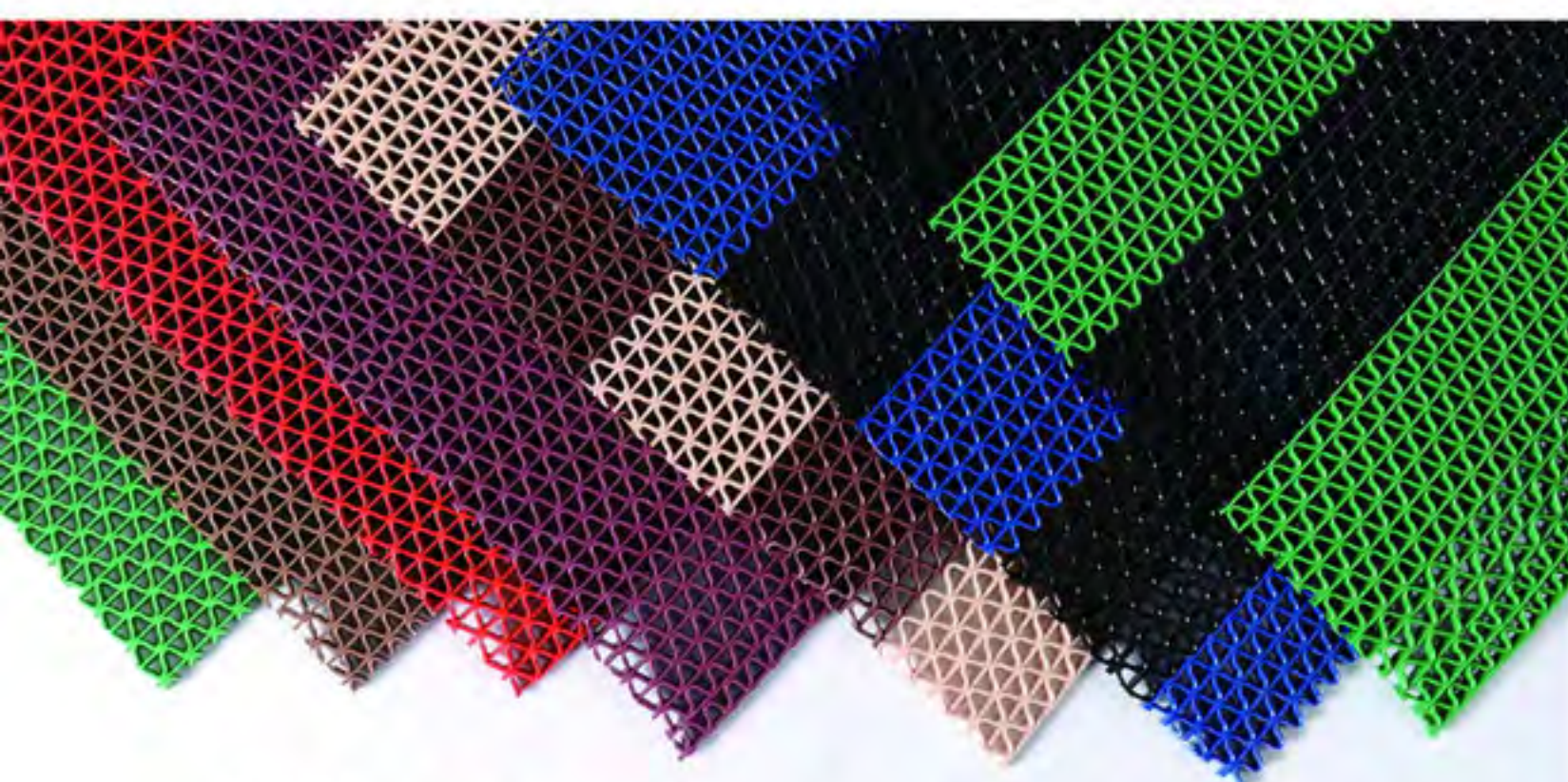
Thickness: 10mm, 12mm, 15mm and so forth

Dimensions of coiled material: 1.2*12m/1.2*18m

Dimensions of sheet material: 0.4*0.6m, 0.5*0.7m, 0.6*0.8m and etc.

Color: red, blue, green, gray, black, coffee, yellow and etc.

Trial places: entry of hotels, shopping malls, office towers, lobbies, restrooms to avoid slippery, doors of buildings, doors of restrooms, inside cars and etc.



Waterproof pvc mat can satisfy the needs of office, hotel, bathroom, swimming, toilet etc with superior performance of beautiful design, abundant color, species diversity.
Size: 90cm/120cm/150cm/160cm/180cm.
Thickness: 5.0mm±



WATERPROOF PVC MAT





ARTIFICIAL GRASS FOR TRAINING /TRACK

Pile height: 25mm...
 Gauge: 3/8 inch...
 Stitches rate: 16 stitches /10cm
 Yarn Material: PE Fibrillated
 Color: colourful
 Backing: PP cloth + Non-woven + SBR latex

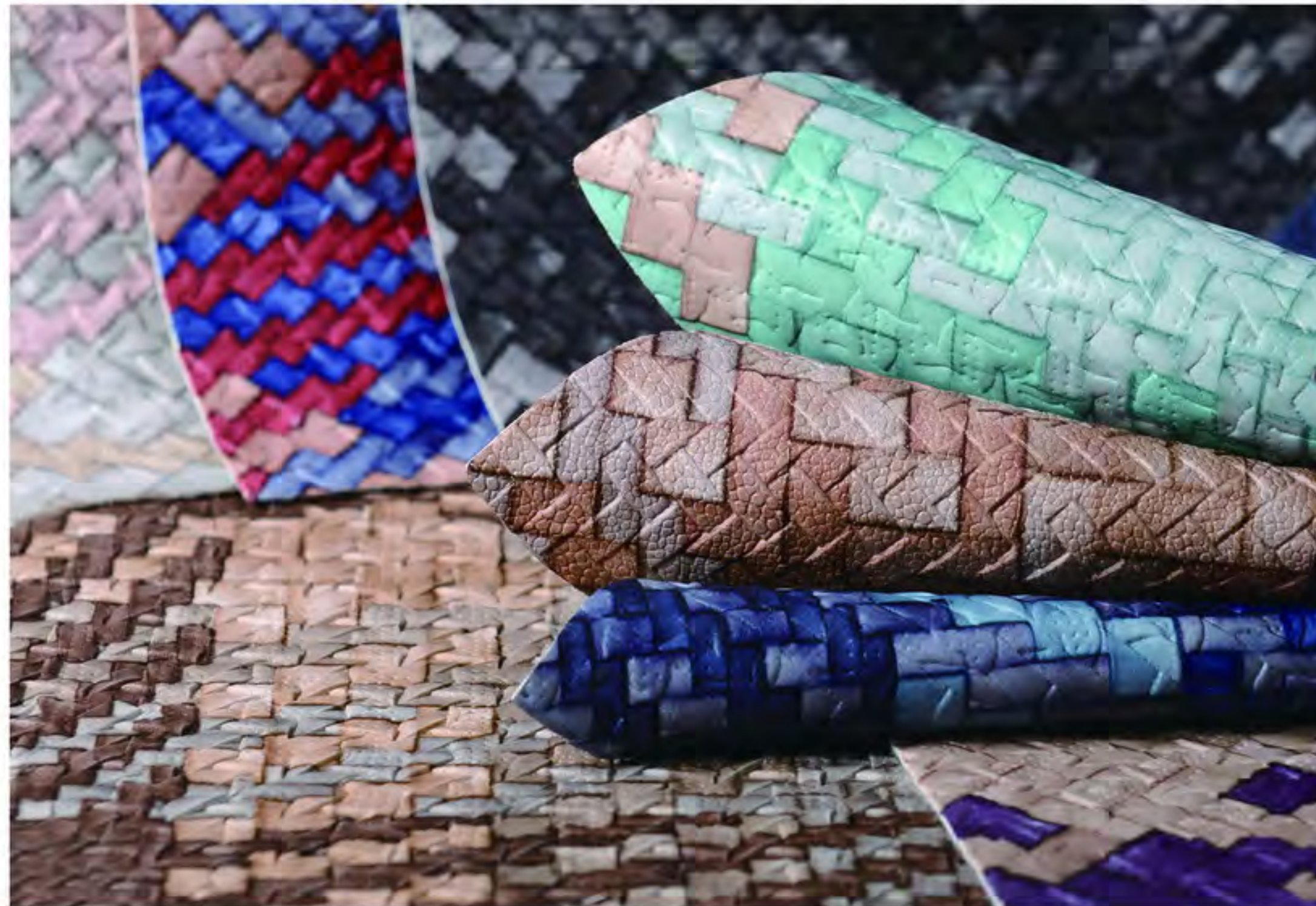


ARTIFICIAL GRASS FOR SPORT

Pile height: 6mm/10mm/12mm/15mm/25mm/50mm...
 Gauge: 5/8 inch, 5/16inch, 5/32inch...
 Yarn Material: PE Monofilament
 Color: can be produced according to the requirements of the clients or the color samples provided by our company.
 Backing: PP cloth + Non-woven + Net+SBR latex



LUGGAGE LEATHER

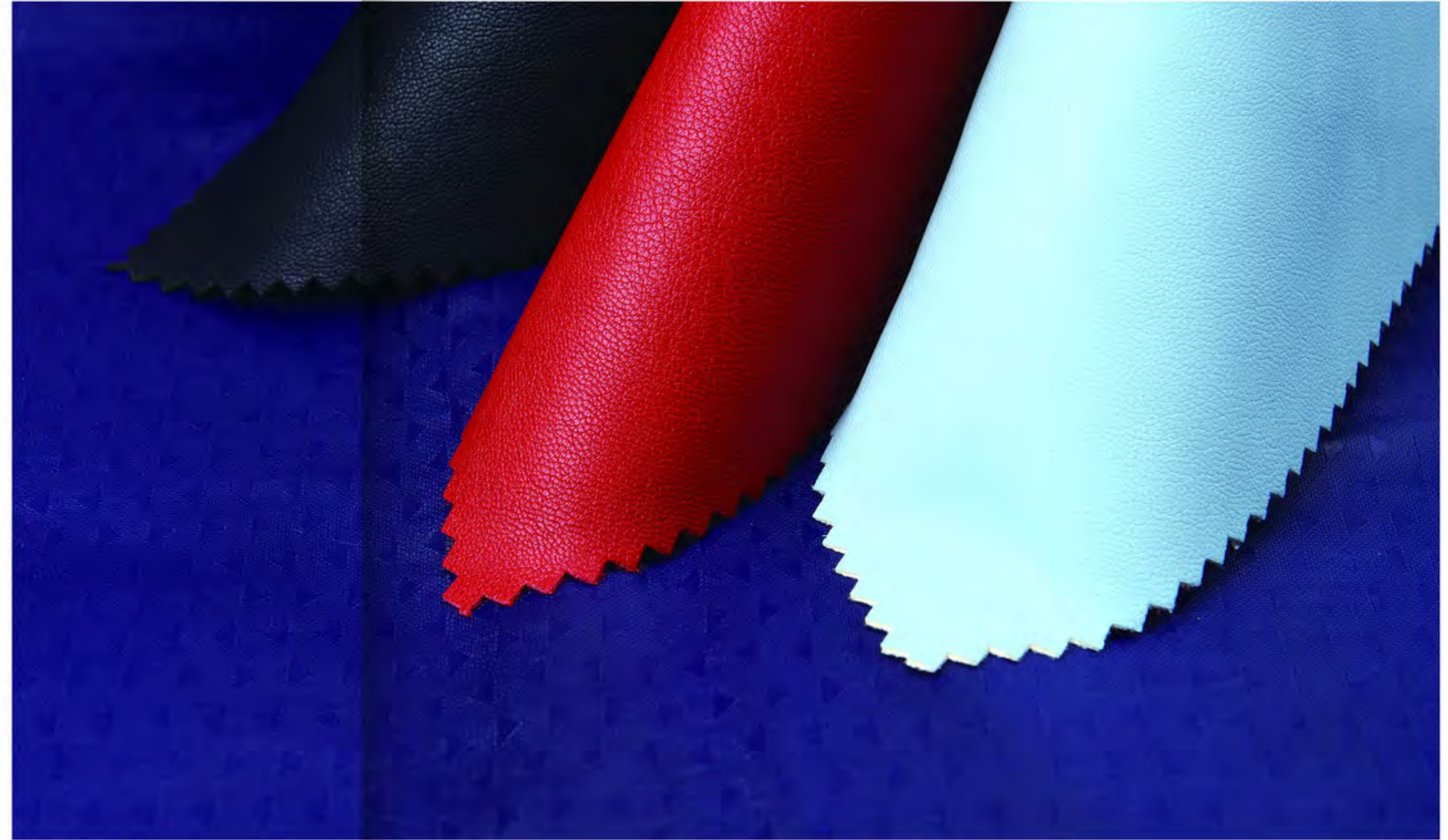
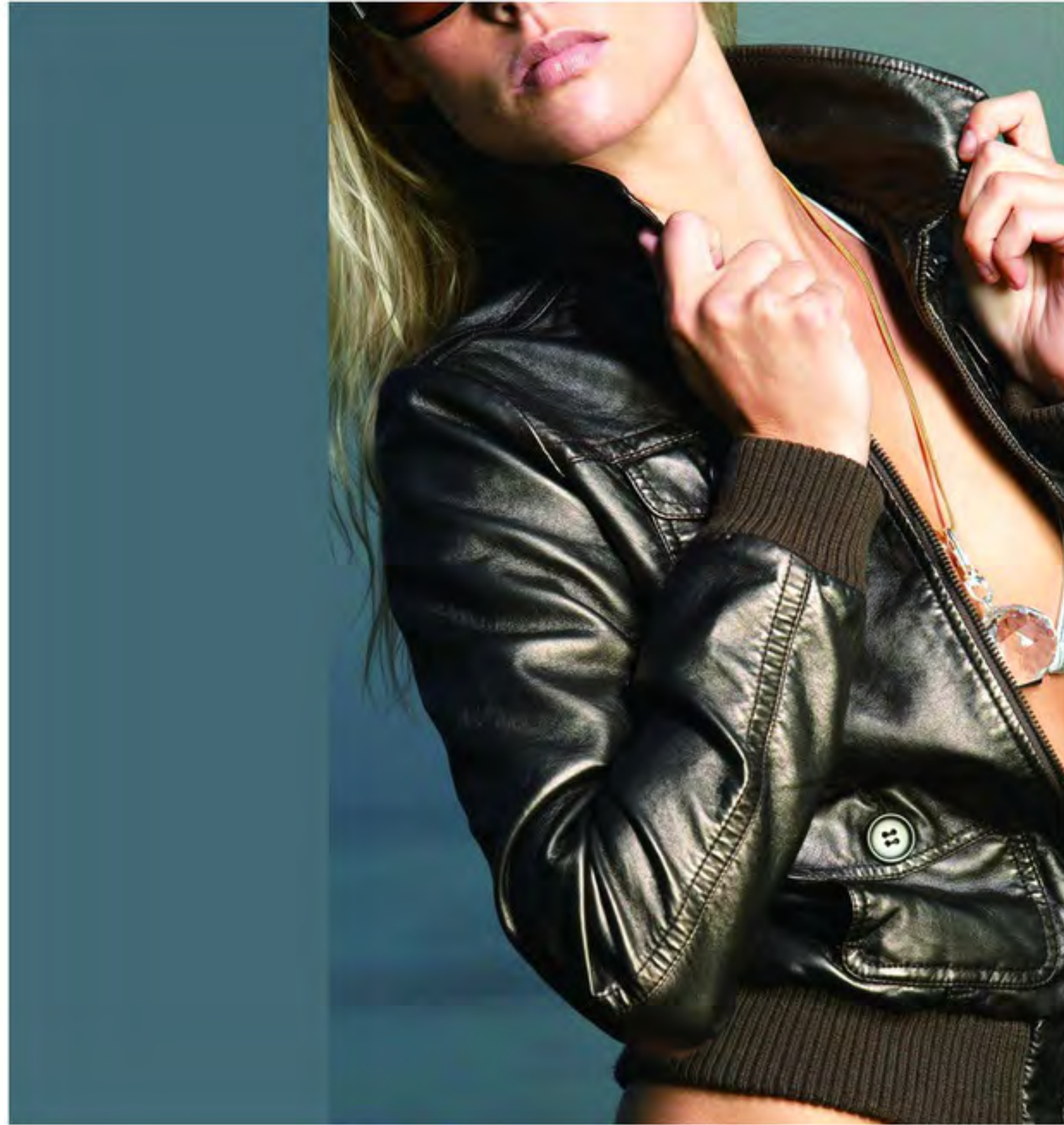


LUGGAGE LEATHER



Thickness: 0.5-2.0mm **Fabric width:** 54" (Effective fabric width 137cm)
Base cloth: knitted fabric, elastic fleecy fabric, interwoven fabric, non-woven fabric, plain weaving fabric
Color: can be produced according to the requirements of the clients or the color samples provided by our company.
Surface processing: color alteration, paper line, embossing, printing, spray, six-template printing, pad pasting, luster adding, luster eliminating, polishing, buffing, grain kneading, flocking, design planting, pearly luster, mirror face, moisture curing, and other techniques
Special requirements: environmental protection, wear resistance, scratch resistance, cold resistance, yellowing resistance, oil resistance, aging resistance
Purposes: can be used for men's and women's fashion bags, brief case, makeup bag(case), draw-bar box, etc.





CLOTHING LEATHER

Thickness: 0.2-0.9mm

Fabric width: 54" (Effective fabric width 137cm)

Base cloth: semi mucilage glue, full mucilage glue, knitted elastic fabric, polyester pongee, chamois suede, etc.

Color: can be produced according to the requirements of the clients or the color samples provided by our company.

Surface processing: color alteration, paper line, embossing, pad pasting, luster adding, luster eliminating, polishing, buffing, grain kneading, washing, pearly luster, mirror face and other techniques

Special requirements: environmental protection, washing resistance, water and vapor permeability, wear resistance, scratch resistance, cold resistance, oil resistance, aging resistance

Purposes: can be used for men's and women's fashion dress, jacket, dust coat, down jacket, leather skirt, leather trousers, etc.



A pair of finished shoes are generally comprised of 4 parts:

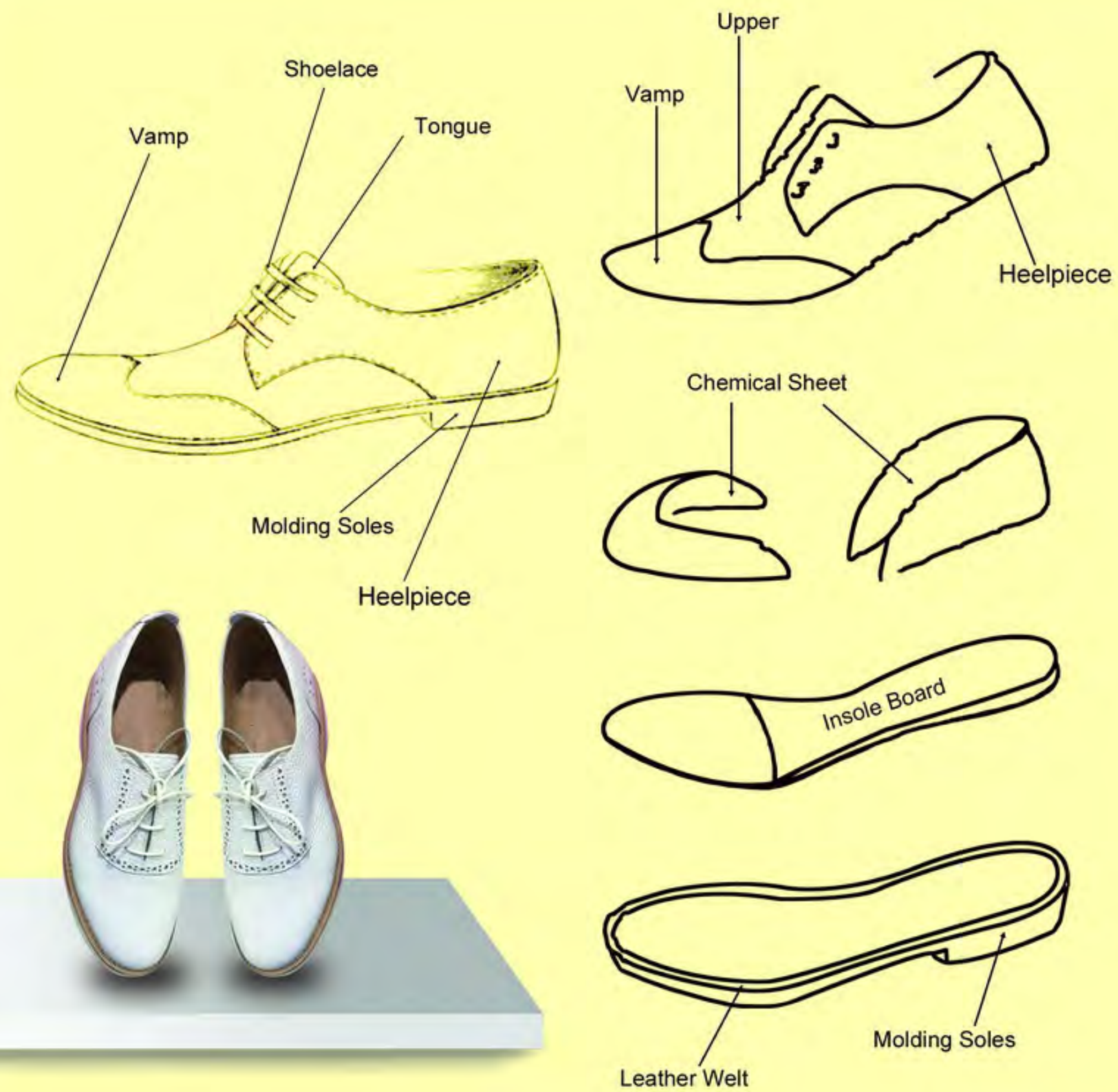
- 1.vamp/upper
- 2.shoe lining
- 3.insole
- 4.sole

Vamp: generally made of genuine leather, PU, cloth or other materials.

Lining: generally made of pigskin, PU, cloth.

Insole: generally made of the same materials as those of lining.

Sole: consists of molding sole and composite sole; made of rubber, PU, raw rubber.



SHOE LEATHER

Thickness: 0.8-2.5mm.

Fabric width: 54" (Effective fabric width 137cm)

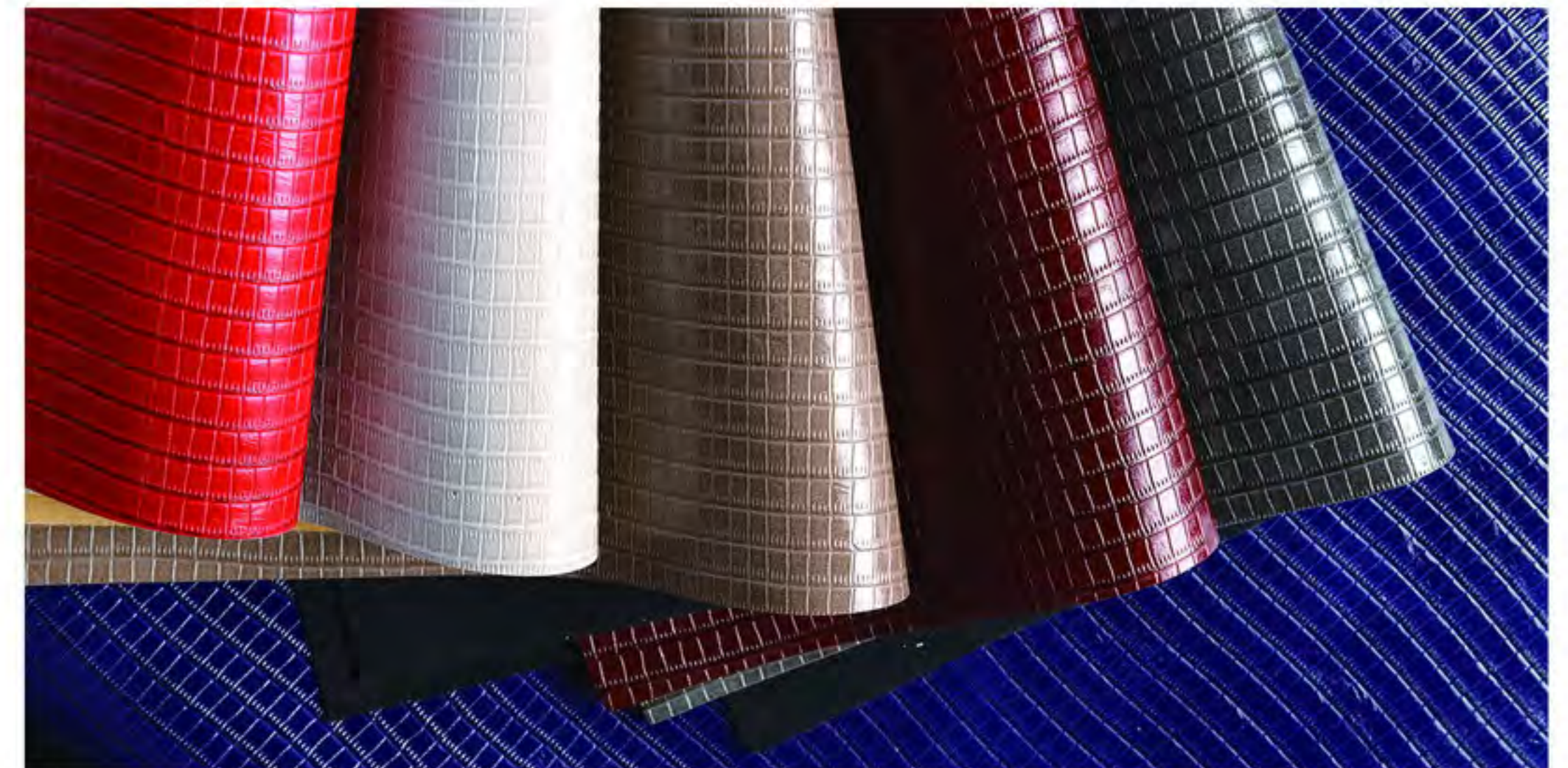
Base cloth: elastic fleecy cloth, velveteen, T/C cloth, interwoven fabric, high temperature and high pressure back coating, etc.

Color: can be produced according to the requirements of the clients or the color samples provided by our company.

Surface processing: color alteration, paper line, embossing, printing, spray, pad pasting, luster adding, luster eliminating, polishing, buffing, grain kneading, flocking, design planting, pearly luster, mirror face, moisture curing, and other techniques

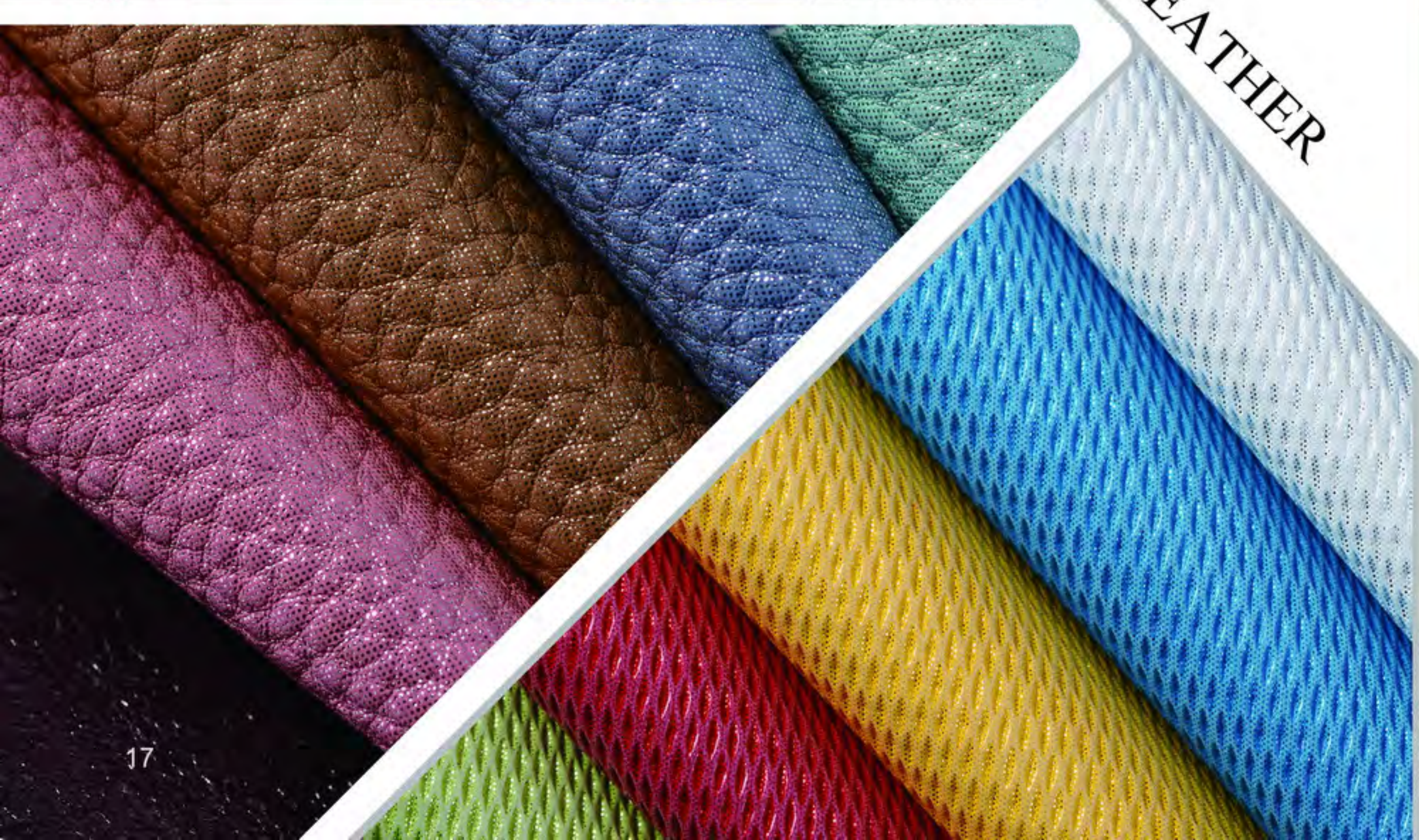
Special requirements: environmental protection, air and water vapor permeability, hydrolysis resistance, twist resistance, coldness resistance, aging resistance, yellowing resistance, sulfuration resistance, anti-bacteria and odor resistance, etc.

Purposes: can be used for sports shoes, men's and women's fashion shoes, leisure shoes, vulcanized shoes, indoor slippers, students' shoes, nurses' shoes, etc.





SHOE LEATHER



PVC SNEAKER LEATHER



PVC SNEAKER LEATHER

Thickness: 0.8-2.5m

Fabric width: 54"(effective width 137cm)

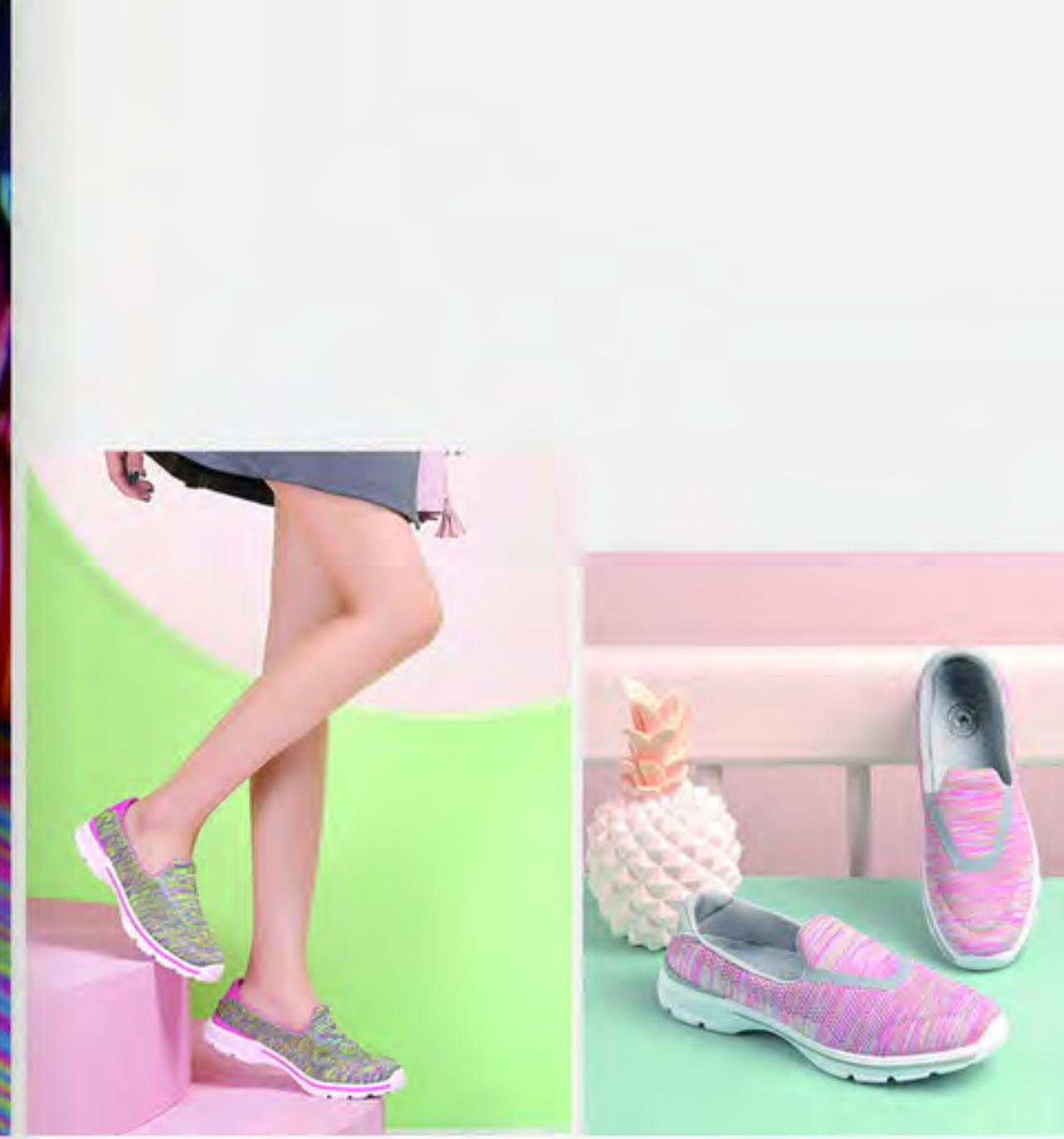
Base cloth: knitted fabric, interwoven fabric and etc.

Color: can be produced according to the requirements of the clients or the color samples provided by our company.

Surface processing: paper line, embossing, spray, pad pasting, luster adding, luster eliminating, pearl luster, mirror face and other techniques.

Purposes: can be used to make sneakers and etc.





MESH SHOE FABRIC

Material: dacron
 Grammage: tailored at the request of clients.
 Fabric width: 150cm.
 Properties: firm and durable, breathable.
 Purposes: vamp, boxes, car cover

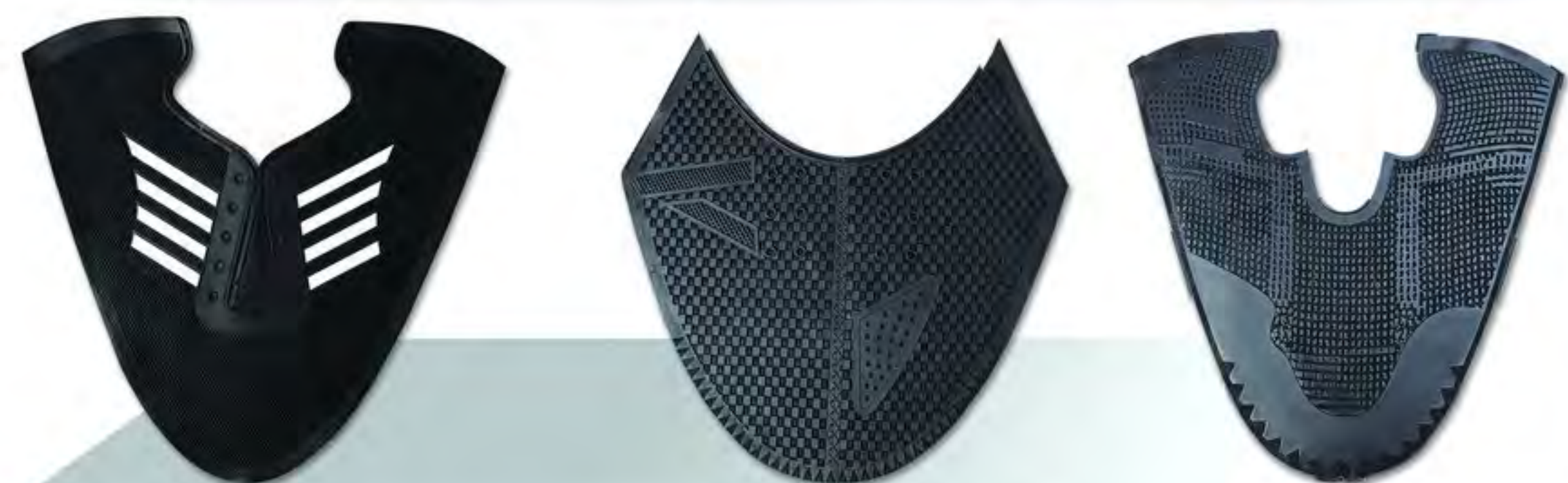


KPU 3D BREATHABLE VAMP

Material: TPU resin + various backing and lining
The surface patterns, dimensions, printing, and base cloth materials may be tailored at the request of the clients...

Product properties: fold-resistant, dirt-resistant, non-fading, abrasion-resistant, and etc.

Purposes: vamp, cases and boxes, garment tags, luggage cases, watch bands, car decorations, sports goods and etc.



FLYKNIT WEAVING VAMP

Material: dacron

Technique: big machine embroidery

Product properties:

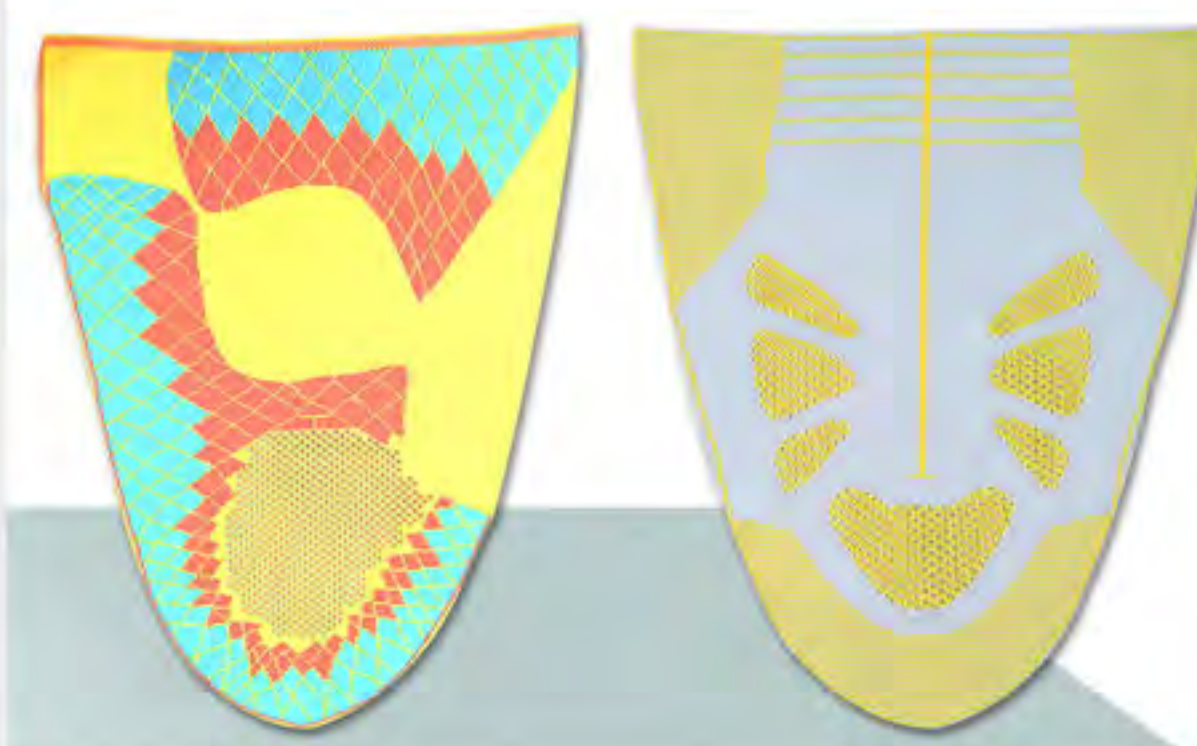
1. Flyknit vamp is modeled in one time and adopts jacquard knitted fabric which renders diversified patterns and colors and beautiful appearance;

2. Flyknit vamp is relatively environment-friendly if compared with leather products which generates pollution;

in addition, knitted fabric is breathable and light, avoiding foot odour;

3. Manufacturers of finished shoes only need to purchase soles and by gluing the soles and vamps, they can make a pair of shoes. This reduces production procedures as well as labour cost.

Purposes: cases and boxes, fashion clothes, knitted sneakers



Shoe Lining Leather

Thickness: 0.5mm-1.0mm

Width: 54" (effective width: 137cm)

Backing: nonwoven fabric, impregnation backing, T/C fabric and so on.

Color: as customer required, or according to the color samples provide by our company.

Use: shoe lining leather mainly used in the inner part of shoes except the tread and to make the shoe more comfortable, and it also has good resistance of abrasion and humidity.



SHOE LINING LEATHER



COUNTER

ALSO CALLED CHEMICAL FIBER RESIN SHEET, CHEMICAL SHEET

Product thickness: 0.9mm, 1.25mm, 1.5mm, 1.75mm, 2.0mm, 2.25mm, 2.5mm, 2.75mm, 3.0mm, 4.0mm.

Product specifications: 36*60(91.44cm*152.4cm)/piece or 36*54(91.44cm*137.2cm)/piece, 1m*1.5m/piece.

Product color: creamy white, orange, green, pink, coffee, charcoal grey, or can be designed and developed according to the requirements of the clients.

Advantages of counter resin sheet:

1. Strong viscosity, good sizing, excellent durability; although thin, having good hardness and strength.
2. Free of modification, rain and sweat stain resistance, and good yielding performance.
3. Easy and simple to handle, not needing special equipment.

Main purposes of chemical sheet:

1. Card-adding resin sheet maintenance and sizing for pump shoes, semi pump shoes, riding boots, and front strap and back strap of gym shoes.
2. Sandal inner buckle strap, and the side strap can be sized with resin sheet.
3. Bag and suitcase, hand bag, brim, collar, and paper clip can be sized with resin sheet.



FIBER INSOLE BOARD

Also called chemical fiber insole board, non-woven fabric insole board, water resistible and air permeable insole board, NBA using hard texture, NBS using soft texture.

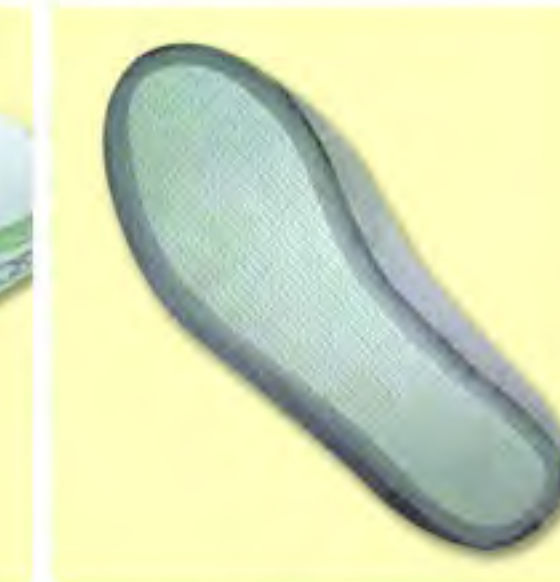
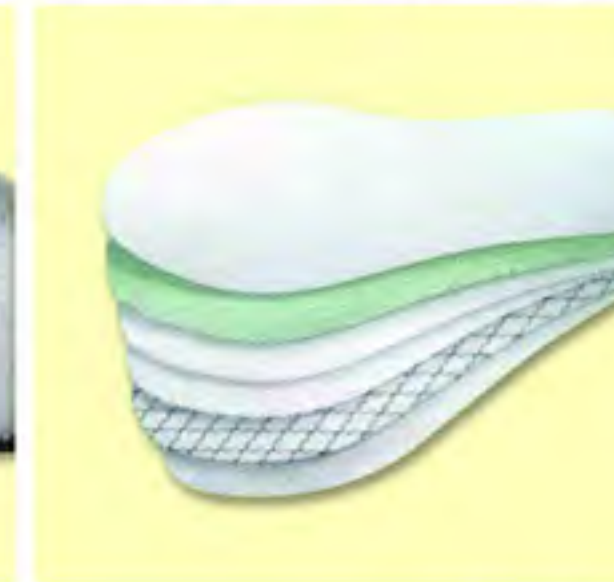
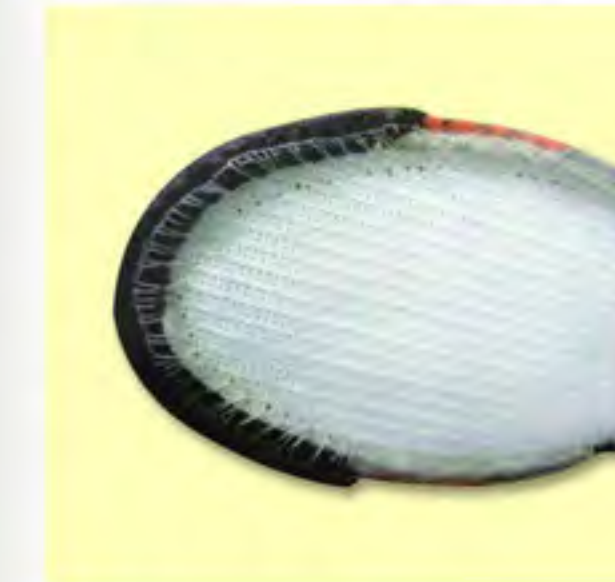
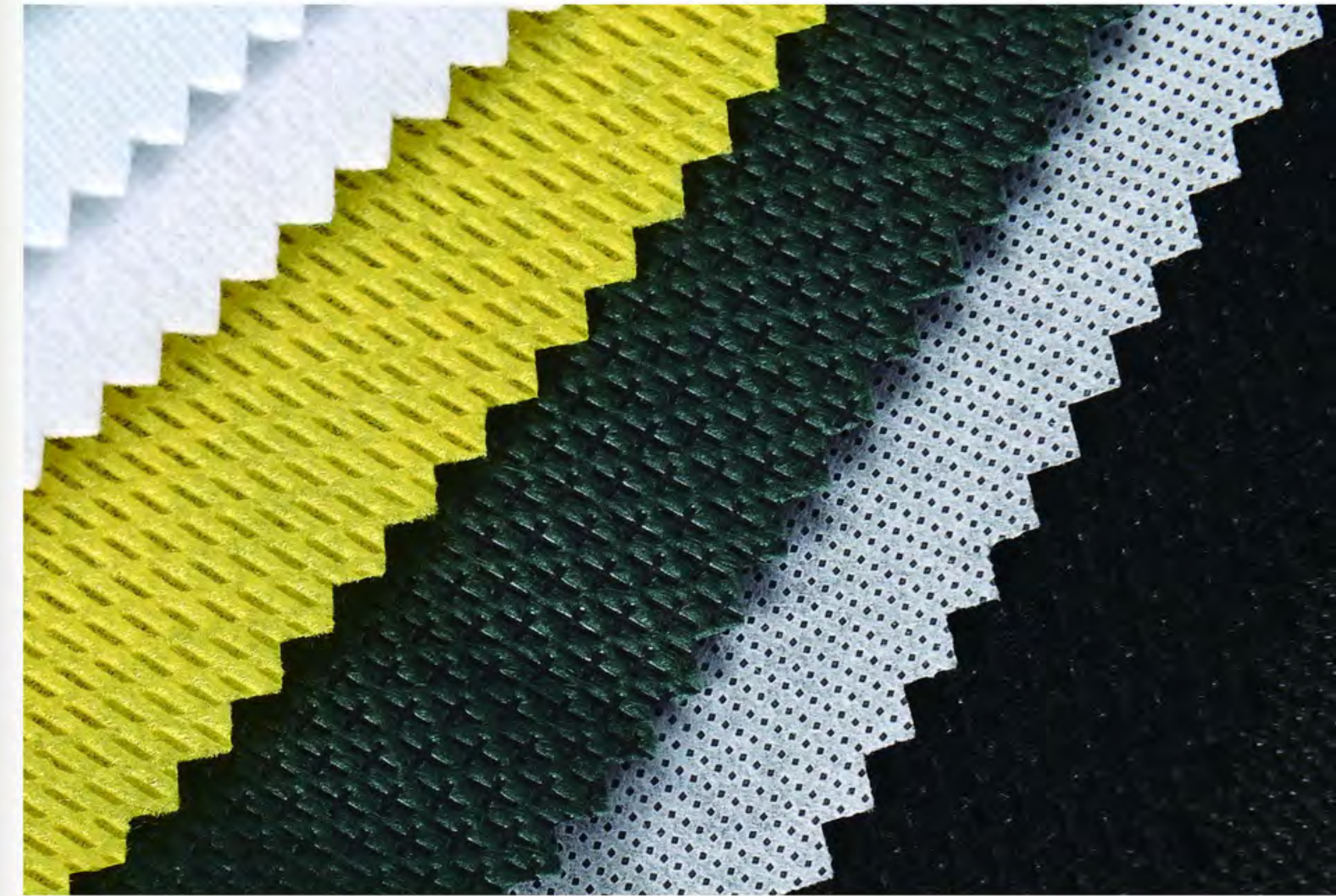
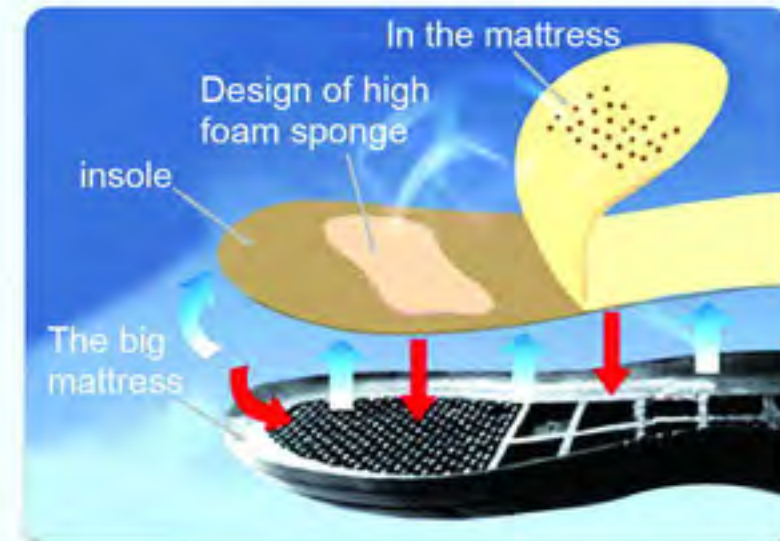
Product thickness: 0.9mm, 1.25mm, 1.5mm, 1.75mm, 2.0mm, 2.25mm, 2.5mm, 2.75mm, 3.0mm, 4.0mm.

Product specifications: 36*60(91.44cm*152.4cm)/piece or 36*54(91.44cm*137.2cm)/piece, 1m*1.5m/piece.

Product color: creamy white, orange, green, pink, coffee, charcoal grey, or can be designed and developed according to the requirements of the clients.

Product characteristics:

1. Strong viscosity, and no delamination after sticking.
2. Good tenacity, hardness, yielding property, and processing property.
3. Good water permeability, good sweat heat volatilization, and good for foot drying and refreshing Widely used for various shoe insole, bag and suitcase, hand bag, stationery, toy, leatherware, and furniture, etc.



SHOE RPET

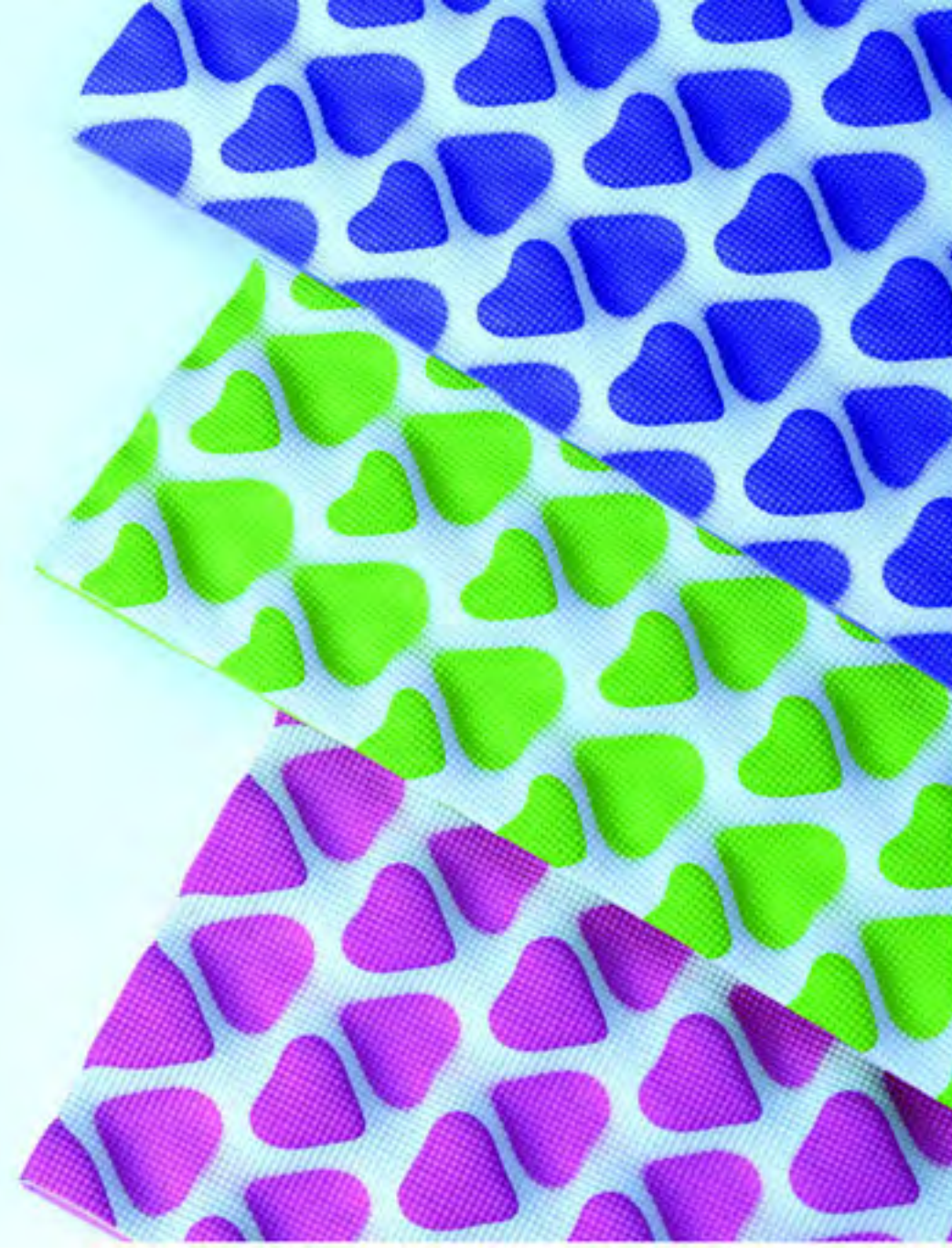
Material: dacron
Thickness: 0.8mm, 1.0mm
Fabric width: 36", 150cm
Color: black, white
Properties: durable, uniform thickness, non-deformation, resemblance of textiles, good tensile strength, strong abrasion resistance, good air permeability, and sanitary.
Purposes: box lining, sofa lining, vamp lining, wall covering fabric, gift box, decoration.

CANBERRA NON-WOVEN FABRIC

Ingredient: Polypropylene/nylon
Lines: cross lines, dots, etc.
Grammage: 80-200gsm
Fabric width: 150cm (within)
Characteristics: wear resistance, heat resistance, good stretch, chemical resistance, good fabric uniformity, clear lines, good air permeability, easy dyeing, easy processing.
Purposes: can be used as shoe materials or used to make outdoor products, luggage lining, clothing lining, household products, packaging materials, medical supplies, handmade crafts.

EVC COLORED SHEET

Producing from high quality raw material, fresh color and smooth surface. It is widely used in shoes material, bags, toys and sports equipments.



RUBBER SHOE SOLE

Size: 100*120cm, 100*110cm, 60*100cm, 47*70cm, etc.

Thickness: 2.0mm~6.0mm;

Hardness: 86-96SHOREA;

(A) material color: black, cream color, brown.

(B) surface color: can be made according to the requirements of the clients

Surface processing: glossy, matt, laminating, dull polishing, paint spraying, leather grain, wood grain, color wiping, drawbench, high temperature printing, etc.. Sample or design drawing of finished sole and semi finished sole can be posted for die sinking and production;

Product characteristics: good surface smoothness, various clear patterns can be pressed out on the surface, appearance and performance similar to leather, better wear resistance, lower cost, skid resistance, and shock absorption

Application scope: outsole of low-tier, middle-tier, and high-tier leather shoes(including children's shoes,

women's shoes, men's shoes, gym shoes, leisure shoes, leather shoes, and riding boots)

