

*For your colorful life*

世界因你而多彩



**NINGBO MH INDUSTRY CO., LTD.**

Add: #18 Ningnan North Road, Ningbo, China

Tel: 0086-574-27766888, 27766999

Fax: 0086-574-27766000, 27766111

E-mail: mh@mh-chine.com

web: www.mh-chine.com

Socials:

<http://www.facebook.com/ningbomhofficial>

<https://www.youtube.com/c/ChinaMH>



Zipper

Puller



## About us MH



### MH office building for 500+ sales and assistants.

Established in 1999, Ningbo MH has been in garment accessories and fabrics business line for 21 years. Our main products are sewing threads, embroidery threads, ribbons & tapes, embroidery laces, buttons, zippers, interlinings, and other accessories & fabrics. In 2019 the total sales amount was \$486 million, being one of the top suppliers in China for textile industry.

Now MH owns nine factories located in 4 industry zones for thread, lace and ribbon products, being the footstone for MH's dream "kingdom of tailor's material".

MH also set up long-term cooperation relationship with 1520 manufacturers for over 10000 kinds of tailor's material and fabric, work closely together to build a kingdom of tailor's material for customers!

MH has 320 professional sales in team work, and 40 oversea branches with 75 local staff in Africa, Latin America, Eastern Europe, Asia, etc. Each sales team provide value-added services for customers in specified market, so customers could enjoy professional, quick and effective door-to-door service.

MH was regarded as "Top 500 China Service Industry" and "AA Trustworthy Company", and "MH", "TWO BIRDS" trademark get great reputation both in domestic and oversea market.

MH will make continuous efforts to create a kingdom of tailors material, and supply customers with full-category, reasonable price, on-time delivery, and suitable-quality tailor's material and fabric products.

## Industry Center



▲ MH industry center in Hunan, 220,000m<sup>2</sup> workshop



▲ 7,000m<sup>2</sup> warehouse, over 300\*40'HQ/month shipped out here



▲ Zipper Puller displaying in 2,000m<sup>2</sup> showroom



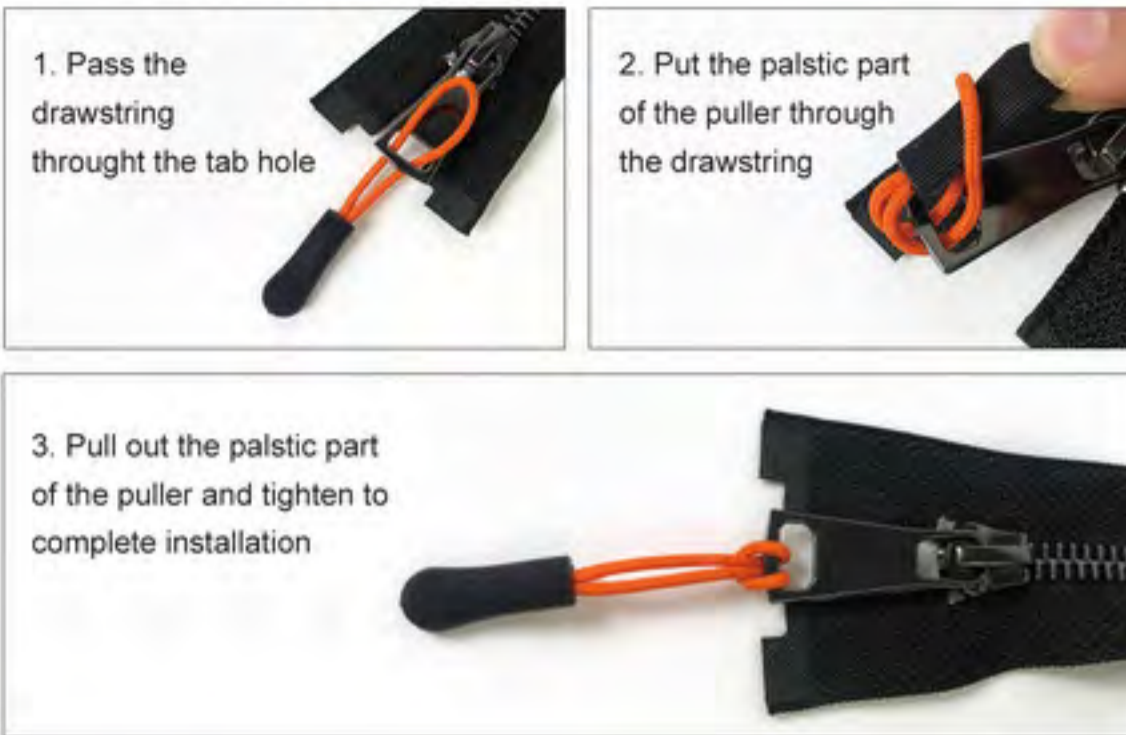
▲ Office-sales team working



# Zipper Puller

Size and shape: can be customized  
 Material: PVC, PU, PP  
 Color: can match perfectly with whatever customer's need.  
 Drawstring: elastic or non-elastic  
 Teconology: plastic dropping, injection molding  
 Application: Clothes, Shoes, Purse, Handbag, Luggage, Jacket, Backpack, Boot...  
 Packing: OPP bag, carton, or as per customer requirements.

## Installation procedure



# Zipper Puller





# Zipper Puller



20NZ-9055 Size: 19\*9\*38mm  
 20NZ-9056 Size: 19\*8\*45mm  
 20NZ-9054 Size: 17\*8\*45mm  
 20NZ-9058 Size: 18\*8\*43mm  
 20NZ-9059 Size: 24\*10\*42mm



19NZ-1162 Size: 10\*10\*40mm  
 19NZ-1163 Size: 13\*8\*45mm  
 20NZ-9062 Size: 20\*10\*38mm  
 20NZ-9060 Size: 21\*6\*43mm  
 20NZ-9061 Size: 25\*9\*38mm



19NZ-1169 Size: 22\*15\*40mm  
 20NZ-9065 Size: 25\*6\*40mm  
 20NZ-9067 Size: 25\*6\*43mm  
 19NZ-1173 Size: 20\*10\*55mm  
 20NZ-9068 Size: 38\*8\*52mm

# Zipper Puller



19NZ-1506 Size: 18\*10\*40mm  
 19NZ-1509 Size: 20\*15\*37mm  
 19NZ-1507 Size: 20\*15\*37mm  
 19NZ-1505 Size: 16\*10\*42mm  
 19NZ-1504 Size: 25\*9\*40mm



20NZ-9064 Size: 20\*6\*40mm  
 19NZ-1172 Size: 22\*9\*40mm  
 19NZ-1503 Size: 20\*10\*42mm  
 20NZ-9063 Size: 24\*9\*40mm  
 19NZ-1170 Size: 25\*8\*40mm



19NZ-0573 Size: 12\*12\*40mm  
 6580-0010 Size: 21\*7\*40mm  
 6580-0096 Size: 20\*13\*41mm  
 6580-0104 Size: 20\*5.5\*46mm  
 6580-0175 Size: 26\*30\*40mm



# Zipper Puller



19NZ-1525 Size: 15\*10\*42mm  
 19NZ-1525 Size: 15\*10\*42mm  
 20NZ-9072 Size: 22\*7\*40mm  
 20NZ-9072 Size: 22\*7\*40mm  
 20NZ-9072 Size: 22\*7\*40mm



6580-0067D Size: 25\*9\*40mm  
 6580-0067D Size: 25\*9\*40mm  
 6580-0067D Size: 25\*9\*40mm  
 6580-0067D Size: 25\*9\*40mm  
 6580-0067D Size: 25\*9\*40mm



6580-0067D Size: 25\*9\*40mm  
 6580-0067D Size: 25\*9\*40mm  
 6580-0067D Size: 25\*9\*40mm  
 6580-0067D Size: 25\*9\*40mm  
 21NZ-9071 Size: 24\*9\*44mm

# Zipper Puller



20NZ-9071 Size: 12\*6\*38mm  
 19NZ-1159 Size: 18\*9\*30mm  
 21NZ-9018 Size: 22\*6\*40mm  
 21NZ-9019 Size: 22\*6\*40mm  
 21NZ-9020 Size: 22\*6\*40mm



19NZ-1166 Size: 17\*8\*40mm  
 20NZ-9073 Size: 25\*7\*42mm  
 20NZ-9073 Size: 25\*7\*42mm  
 20NZ-9073 Size: 25\*7\*42mm  
 20NZ-9073 Size: 25\*7\*42mm



21NZ-9015 Size: 20\*6\*42mm  
 21NZ-9015 Size: 20\*6\*42mm  
 21NZ-9015 Size: 20\*6\*42mm  
 21NZ-9016 Size: 20\*5\*42mm  
 21NZ-9016 Size: 20\*5\*42mm



# Zipper Puller



19NZ-1519 Size: 39\*10\*46mm  
 19NZ-1519 Size: 39\*10\*46mm  
 19NZ-1519 Size: 39\*10\*46mm  
 19NZ-1519 Size: 39\*10\*46mm  
 21NZ-9007 Size: 38\*10\*50mm



20NZ-9070 Size: 38\*10\*50mm  
 21NZ-9006 Size: 38\*10\*50mm  
 21NZ-9011 Size: 38\*10\*50mm  
 21NZ-9011 Size: 38\*10\*50mm  
 21NZ-9011 Size: 38\*10\*50mm



21NZ-9012 Size: 38\*10\*50mm  
 21NZ-9012 Size: 38\*10\*50mm  
 21NZ-9012 Size: 38\*10\*50mm  
 21NZ-9012 Size: 38\*10\*50mm  
 21NZ-9012 Size: 38\*10\*50mm

# Zipper Puller



19NZ-1513 Size: 25\*8\*38mm  
 19NZ-1514 Size: 25\*8\*38mm  
 19NZ-1516 Size: 25\*8\*38mm  
 19NZ-1511 Size: 25\*8\*38mm  
 19NZ-1512 Size: 25\*8\*38mm



19NZ-1515 Size: 25\*8\*38mm  
 19NZ-1517 Size: 25\*8\*38mm  
 19NZ-1518 Size: 25\*8\*38mm  
 19NZ-1526 Size: 27\*9\*41mm  
 21NZ-9001 Size: 30\*9\*40mm



21NZ-9002 Size: 25.5\*8\*40mm  
 21NZ-9003 Size: 25.5\*8\*40mm  
 21NZ-9003 Size: 25.5\*8\*40mm  
 21NZ-9004 Size: 25.5\*8\*40mm  
 21NZ-9005 Size: 25.5\*8\*40mm



# Zipper Puller



20NZ-9069 Size: 15\*15\*40mm  
 19NZ-1164 Size: 24\*10\*40mm  
 19NZ-1165 Size: 24\*10\*40mm  
 19NZ-1171 Size: 30\*10\*40mm  
 19NZ-1161 Size: 25\*13\*40mm



6580-0170 Size: 10\*13\*45mm  
 21NZ-9072 Size: 18\*11\*42mm  
 21NZ-9067 Size: 20\*6\*40mm  
 21NZ-9068 Size: 23\*6.5\*40mm  
 21NZ-9070 Size: 7.7\*6\*68mm



19NZ-1167 Size: 25\*6\*40mm  
 21NZ-9023 Size: 26\*9\*40mm  
 19NZ-1529 Size: 42\*8\*40mm  
 21NZ-9008 Size: 38\*10\*50mm  
 21NZ-9009 Size: 38\*10\*50mm

# Zipper Puller



20NZ-9090 Size: 19\*26\*46mm  
 20NZ-9089 Size: 20\*30\*45mm  
 21NZ-9022 Size: 27\*18\*45mm  
 20NZ-9086 Size: 18\*30\*45mm



20NZ-9083 Size: 17\*23\*45mm  
 20NZ-9084 Size: 17\*23\*45mm  
 20NZ-9085 Size: 17\*23\*50mm  
 20NZ-9087 Size: 20\*25\*50mm



19NZ-1508 Size: 10\*13\*50mm  
 19NZ-1510 Size: 18\*16\*50mm  
 20NZ-9088 Size: 27\*27\*50mm  
 20NZ-9091 Size: 30\*23\*50mm